

MD Interstate Pavement Joint Analysis by GPR

Maryland

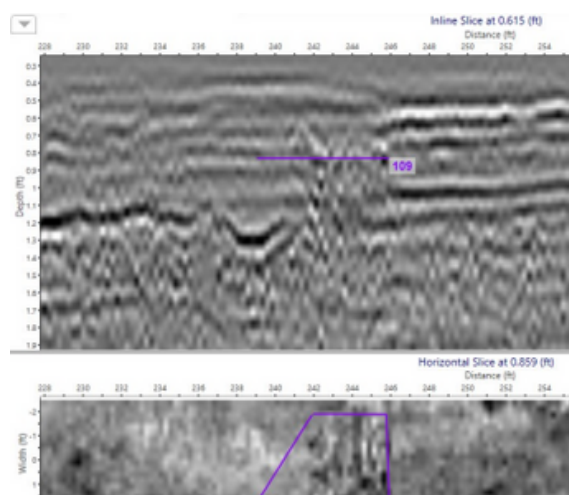
NEXCO was contracted to map the location of composite pavement joints, potential dowel or load-transfer bars, utilities, and irregularities, if present.

The depth, orientation, and pitch of the findings may influence further maintenance and construction efforts in the area.

Though the site location was on an interstate, the data could be collected by ground-coupled GPR during a rolling lane closure. The data was sent to our office where it was processed in under three business days.




Joint and dowel-bar locations



Deficient finding

Project Details

- Client : Washington, DC Agency
- Reference : Mark Wolcott mark.wolcott@iseeusa.net
- Target Length: 1,150ft
- Used Technologies: Ground Penetrating Radar 
- Project Period: June / 2025

Impression

The client was appreciative to learn of what subsurface features they could expect when excavating the area in preparation for installing a new utility line.

Using several maps of findings with deficiencies, moisture concentration, and spacing of joints/reinforcement/support bars, they could plan what areas to target or avoid before digging. The results were produced in a short period and can be updated at any point with new information from boring or first digs.